

EMERGENCY EVACUATION PLAN NOBBYS SLSC

In an emergency phone '000'

In case of **FIRE** leave through the nearest **EXIT**

- If you see SMOKE, FLAMES or hear the FIRE ALARM, alert others immediately
- If safe, close any windows and doors to confine the fire
- Follow the nearest **EXIT** signs to locate and leave through the nearest emergency exit and proceed to the assembly point at the western side of the surf club
- Telephone 000 and notify the fire service
- Use fire extinguisher if a small fire and you are properly trained in extinguisher use, otherwise remain outside at the assembly point
- Calmly follow instructions given by the Executive or Management Committee or the Fire Officers
- Do not re-enter the building until you are told it is safe to do so by the Fire Officers.

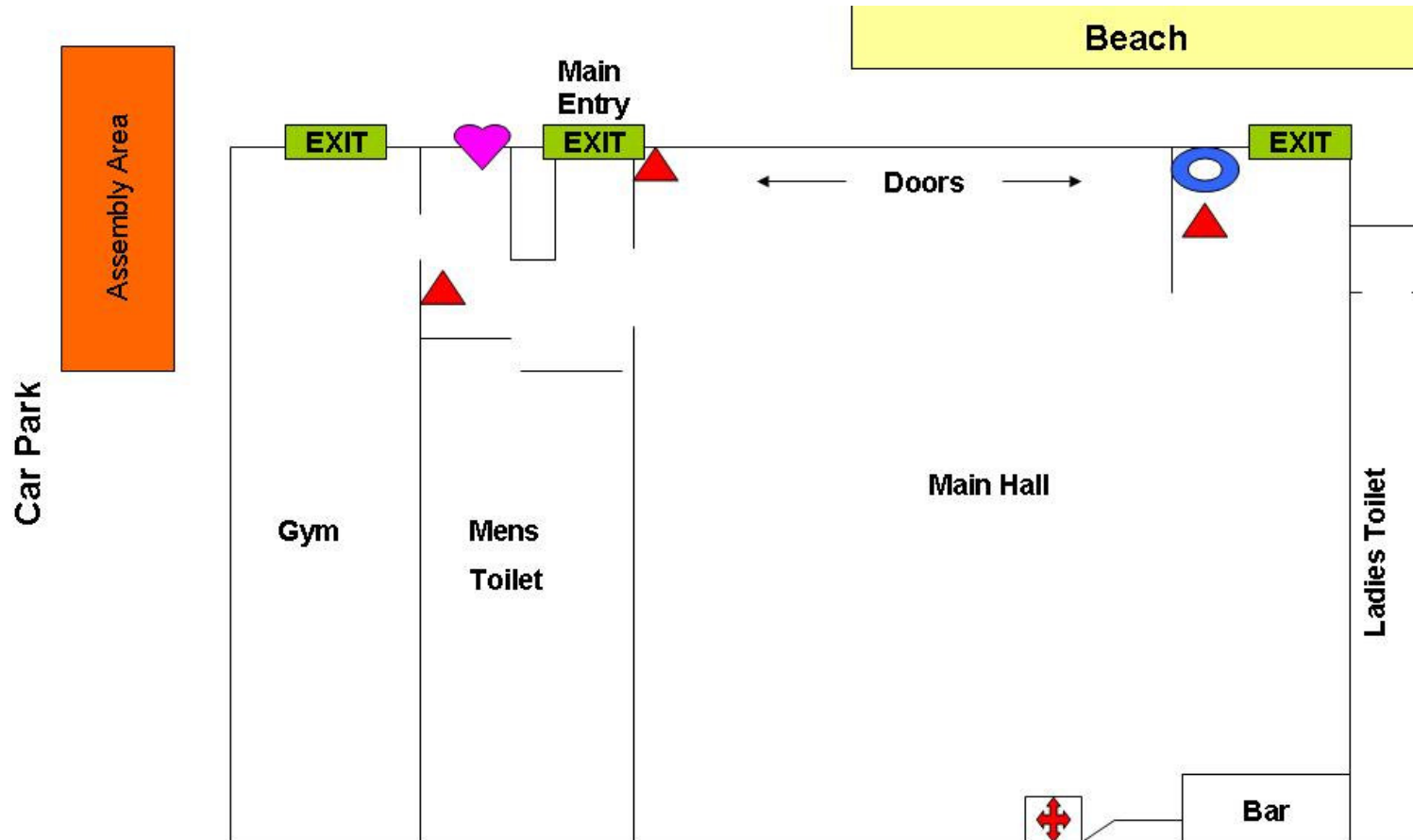
Smoke alarms sounding or evidence of fire occurring



**Evacuate to assembly area, closing doors and windows
if possible**



**Emergency assembly point is the car park to the west
of the club house**

Contact the fire service on 000,





-  Fire Extinguisher
-  Fire Hose
-  First Aid

-  Assembly Area
-  Main Exits

-  Defibrillator

Nobbys SLSC Evacuation Plan

