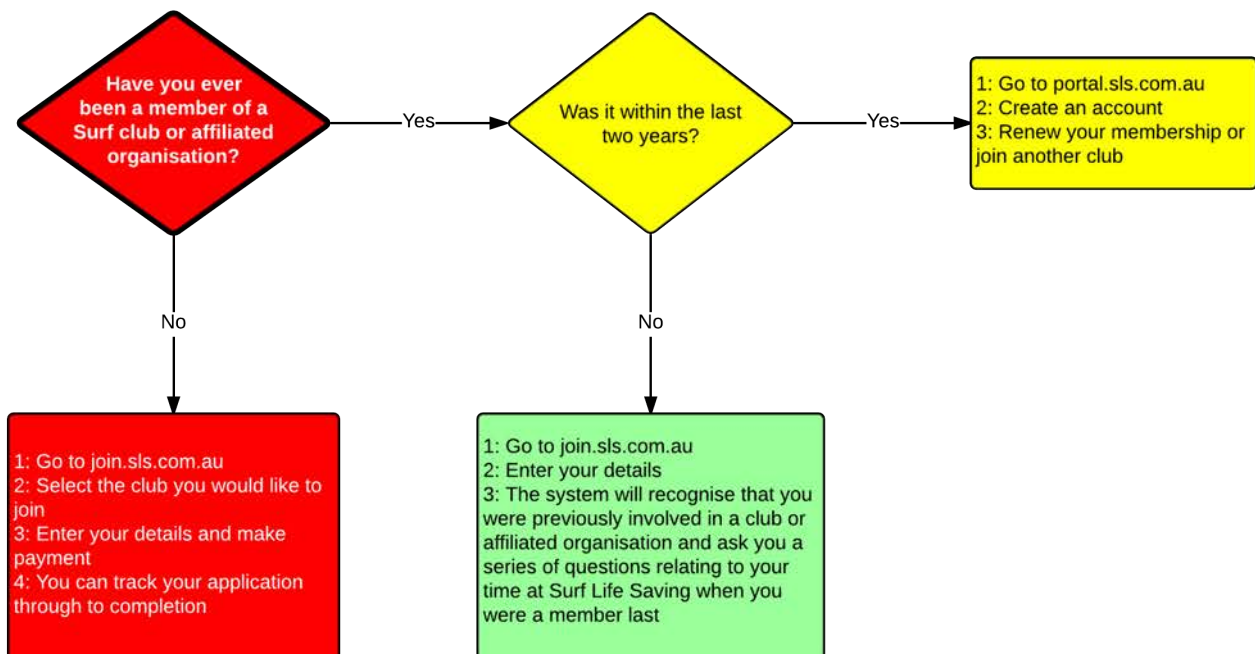




# How to Join or Rejoin a Surf Club

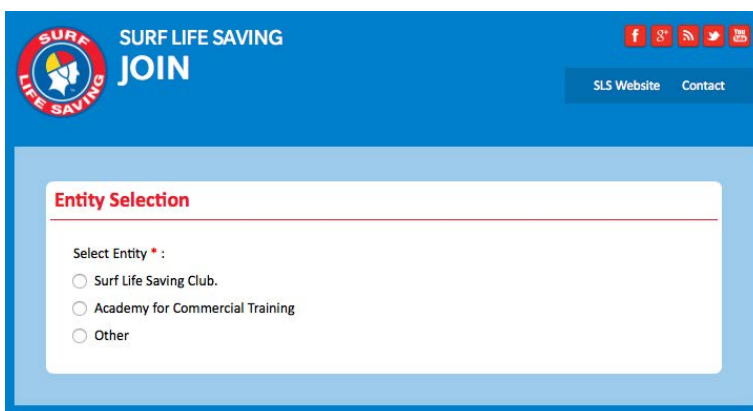
Welcome to Surf Life Saving - it's great that you'd like to get involved in the movement and to make a difference to beach-goers lives. Getting involved means joining a surf club and to enable you to do this, we have created electronic systems to ease you through the process.

## What should you do next?



## Joining for the first time

To join a surf life saving organisation when you've never been a member, you need to go [join.sls.com.au](http://join.sls.com.au) and tell us what sort of organisation you'd like to join: a surf club or a training academy. Simply choose the type of organisation by clicking on the appropriate button.



Once you have chosen the organisation type, you can now nominate the club or academy that you wish to join.

The system has full information on all clubs and organisations so you simply select the appropriate state and then type in the name. If there are a number of organisations with similar sounding names, you can pick the correct one from the list by clicking on the list underneath the text box.

When you have chosen the club or organisation and entered your basic information, you will have to complete the full membership application form. This form includes personal information (email address,

drivers licence number, clothing sizes etc), medical information, emergency contacts and background information. Email Address, Home Address and Postal Address are required fields and must be completed. All other fields are optional, but we would appreciate it if you could take the time to complete them.

At the bottom of the application for are three acknowledgement boxes, one of which only applies if you are a parent or guardian applying on behalf of someone under 18.

Once your application has been submitted you will see a confirmation window which includes your unique tracking ID. You will be sent this information by email, along with a link which you can use to check on the progress of your application.

### Your application for membership has been submitted to Bondi

The application needs to be approved before you become a member and you must fulfill all of the Terms and Conditions of the membership process required by SLSA and the Club. You can track the status of your application anytime using your tracking ID: [10000555971#161544](#).

#### Making Payment

[Click here to pay your membership fee\(s\) online](#) , or contact the club using the below details to make payment.

**Organisation Name:** Bondi

**Phone:** 9300 9279

**Email:** [info@bondisurfclub.com](mailto:info@bondisurfclub.com)

**Website:** [www.bondisurfclub.com](http://www.bondisurfclub.com)

**Postal Address:** PO Box 7007, Bondi Beach, NSW, 2026, Australia

#### Joining Additional people/family members

Please note that as each person is a unique member you need to fill in all of the details for EACH Person and pay separately (or once for a family payment). [Click here if you want to join another person up](#) .

## Rejoining a surf club

If you were previously a member of a surf club or other surf life saving organisation then it is highly likely that there is a record in the national administrative database. If you belonged more than two years ago, then it is also highly likely that many of the details we have for you, have changed. So if you were a member:

**More than two years ago**, please go to [join.sls.com.au](http://join.sls.com.au). You will be asked some simple security questions which will enable us to identify you correctly. Please answer these questions as accurately as you can - they do not have to be 100% correct.

**Less than two years ago**, please go to [portal.sls.com.au](http://portal.sls.com.au) and create an account. The Members Portal is where you can apply to join a club or to renew your membership with your existing club.

### Security Questions

We have noticed you are already in our system, this means you are a returning member which is great! We just need you to answer some quick security questions so we can confirm your identity

What was your previous Organisation?

Select Organization

In what suburb did you reside when you were last a member?

Please type the suburb

In what year were you last a member?:

Select Season

What was your email address when you were last a member?:

Submit

## Next steps

Whether you have never been a member of a surf club or are renewing after a short hiatus, all memberships are managed from within the Members Portal at [portal.sls.com.au](http://portal.sls.com.au) . If you have applied to join a club at [join.sls.com.au](http://join.sls.com.au), once your membership is accepted you will need to create an account at the Members Portal in order to manage your personal details and to renew your membership in the years to come.

If you are an existing member of a club and you simply wish to renew your membership then you will need to go to [portal.sls.com.au](http://portal.sls.com.au) and create an account.